

# AUSTRALIAN PRODUCT INFORMATION

## ADVAGRAF XL® (tacrolimus) PROLONGED-RELEASE CAPSULES

### 1 NAME OF THE MEDICINE

Tacrolimus

### 2 QUALITATIVE AND QUANTITATIVE COMPOSITION

Each 0.5 mg prolonged-release capsule contains 0.5 mg tacrolimus

Each 1 mg prolonged-release capsule contains 1 mg tacrolimus

Each 5 mg prolonged-release capsule contains 5 mg tacrolimus

Contains: lactose

The printing ink used to mark the capsule contains trace amounts of soya lecithin

For the full list of excipients, see Section 6.1 List of excipients

### 3 PHARMACEUTICAL FORM

Prolonged-release capsule

Supplied as:

ADVAGRAF XL 0.5 mg prolonged-release capsules: oblong capsules with a light yellow cap imprinted with "0.5 mg" and an orange body imprinted with "✶647".

ADVAGRAF XL 1 mg prolonged-release capsules: oblong capsules with a white cap imprinted with "1 mg" and an orange body imprinted with "✶677".

ADVAGRAF XL 5 mg prolonged-release capsules: oblong capsules with a greyish red cap imprinted with "5 mg" and an orange body imprinted with "✶687".

### 4 CLINICAL PARTICULARS

#### 4.1 THERAPEUTIC INDICATIONS

ADVAGRAF XL is indicated for use as an adjunct to liver, kidney, lung or heart allograft transplantation in adults and children.

#### 4.2 DOSE AND METHOD OF ADMINISTRATION

The dosage recommendations given below for oral administration should act as a guideline.

ADVAGRAF XL doses should be adjusted according to individual patient requirements.

If allograft rejection or adverse events occur, alteration in the immunosuppressive regimen should be considered.

#### Method of Administration

It is recommended that the oral daily dose of ADVAGRAF XL be administered once daily in the morning.

ADVAGRAF XL capsules should generally be administered on an empty stomach or at least 1 hour before or 2 to 3 hours after a meal, to achieve maximum absorption (Refer to Section 5.2 - PHARMACOKINETIC PROPERTIES - Absorption).

ADVAGRAF XL capsules should be taken immediately following removal from the blister. The capsules should be swallowed with fluid (preferably water).

Oral administration of ADVAGRAF XL should commence as soon as practicable. In some transplantation patients, therapy has commenced orally by administering the tacrolimus immediate-release capsule contents suspended in water via an intranasal gastric tube.

In patients unable to take oral capsules, therapy may be initiated with tacrolimus concentrated Injection as a continuous IV infusion.

### **Liver Transplantation**

Oral tacrolimus therapy should commence at 0.10 – 0.20 mg/kg/day administered as a total daily dose for ADVAGRAF XL. Administration should start approximately 6 hours after the completion of liver transplant surgery.

### **Kidney Transplantation**

Oral tacrolimus therapy should commence at 0.15 – 0.30 mg/kg/day administered as a total daily dose for ADVAGRAF XL. Administration should start within 24 hours of kidney transplant surgery.

### **Lung Transplantation**

Oral tacrolimus therapy should commence at 0.10 – 0.30 mg/kg/day administered as a total daily dose for ADVAGRAF XL. Administration should start within 24 hours of lung transplant surgery.

### **Heart Transplantation**

Oral tacrolimus therapy should commence at 0.075 mg/kg/day administered as a total daily dose for ADVAGRAF XL. Administration should start within 24 hours of heart transplant surgery.

### **Further information for all indications follows:**

#### *Children*

Higher mg/kg doses may be required in children compared with adults to achieve the same tacrolimus blood concentration.

#### *Therapy Dose Levels for Kidney, Liver, Lung or Heart Allograft Rejection Resistant to Existing Immunosuppressive Regimens*

In patients experiencing rejection episodes, which are unresponsive to conventional immunosuppressive therapy, ADVAGRAF XL treatment should begin with the initial dose recommended for primary immunosuppression in that particular allograft.

### **Conversion**

#### *Conversion of tacrolimus immediate-release treated patients to ADVAGRAF XL*

Allograft transplant patients maintained on twice daily tacrolimus immediate-release capsule dosing requiring conversion to once daily ADVAGRAF XL should be converted on a 1:1 (mg:mg) total daily dose

basis. ADVAGRAF XL should be administered in the morning. Following conversion, tacrolimus trough levels should be monitored and if necessary dose adjustments made to maintain similar systemic exposure.

In stable patients converted from tacrolimus immediate-release capsules (twice daily dosing) to ADVAGRAF XL (once daily dosing) on a 1:1 (mg:mg) total daily dose basis, the systemic exposure to tacrolimus ( $AUC_{0-24}$ ) for ADVAGRAF XL was approximately 10% lower than that for tacrolimus immediate-release capsules. The relationship between tacrolimus trough levels ( $C_{24}$ ) and systemic exposure ( $AUC_{0-24}$ ) for ADVAGRAF XL is similar to that of tacrolimus immediate-release. When converting from tacrolimus immediate-release capsules to ADVAGRAF XL tacrolimus trough levels should be measured prior to conversion and within two weeks after conversion. Dose adjustments should be made to ensure that similar systemic exposure is maintained.

In *de novo* kidney and liver transplant patients  $AUC_{0-24}$  of tacrolimus for tacrolimus prolonged-release capsules on Day 1 was 30% and 50% lower respectively, when compared with that for tacrolimus immediate-release capsules at equivalent doses. By Day 4, systemic exposure as measured by trough levels is similar for both kidney and liver transplant patients with both formulations. Careful and frequent monitoring of tacrolimus trough levels is recommended in the first two weeks post-transplant with ADVAGRAF XL to ensure adequate drug exposure in the immediate post-transplant period. As tacrolimus is a substance with low clearance, adjustments to the ADVAGRAF XL dose regimen may take several days before steady state is achieved.

#### *Conversion from cyclosporin to ADVAGRAF XL*

Care should be taken when converting patients from cyclosporin-based to tacrolimus-based therapy (Refer to Section 4.4 – SPECIAL WARNINGS AND PRECAUTIONS FOR USE – Conversion between agents; and Section 4.5 - INTERACTIONS WITH OTHER MEDICINES AND OTHER FORMS OF INTERACTIONS). Tacrolimus-based therapy should be initiated after considering cyclosporin blood concentrations and the clinical condition of the patient. Dosing should be delayed in the presence of elevated cyclosporin blood levels. In practice, tacrolimus-based therapy has been initiated 12 – 24 hours after discontinuation of cyclosporin. Monitoring of cyclosporin blood levels should be continued following conversion as the clearance of cyclosporin might be affected.

#### *Conversion between tacrolimus formulations*

Differences between oral formulations of tacrolimus can lead to important differences in systemic exposure to tacrolimus. Inadvertent or unsupervised switching between formulations is unsafe and could lead to graft rejection or increased incidence of side effects. Therefore, it is appropriate to prescribe and dispense tacrolimus by tradename, taking care to specify appropriate daily dosing (e.g. PROGRAF tacrolimus immediate-release capsules - twice daily dosing, ADVAGRAF XL tacrolimus prolonged-release capsules – once daily dosing). Patients must only be switched from one tacrolimus formulation to another under the close supervision of a transplant specialist.

### **Dose adjustments in special populations**

#### *Elderly*

Experience in the elderly is limited. There is no evidence presently available to suggest that doses should be altered in elderly patients.

### *Patients with Renal Impairment*

No dose adjustment is required. However, careful monitoring of renal function is recommended.

### *Patients with Liver Impairment*

Tacrolimus is extensively metabolised by the liver. In patients with liver impairment dose reduction is recommended.

Tacrolimus is normally administered together with other immunosuppressive drugs. In isolated cases, successful maintenance therapy with tacrolimus alone has been described. Tacrolimus should not be given concurrently with cyclosporin.

### *Race*

In comparison to Caucasians, black patients may require higher tacrolimus doses to achieve similar trough levels.

### *Gender*

There is no evidence that male and female patients require different doses to achieve similar trough levels.

## **Monitoring Advice**

Monitoring of tacrolimus WHOLE BLOOD trough concentrations in conjunction with other laboratory and clinical parameters is considered an essential aid to patient management for the evaluation of rejection, toxicity, dose adjustments and compliance. Factors influencing frequency of monitoring include but are not limited to hepatic or renal dysfunction, the addition or discontinuation of potentially interacting drugs and the post-transplant time. Blood trough concentration monitoring is not a replacement for renal or liver function monitoring and tissue biopsies.

Various assays have been used to measure blood or plasma concentrations of tacrolimus. Comparison of the concentrations in published literature to patient concentrations should be made with care and knowledge of the assay methods employed.

Trough blood concentrations should be measured at 24 hours after an ADVAGRAF XL dose. The majority of patients (adults and children) can be successfully managed if the trough blood concentrations are maintained within the following range:

- Liver transplant: 5 – 20 ng/mL for the first 3 months, 5 – 15 ng/mL thereafter.
- Kidney transplant: 10 – 20 ng/mL for the first 3 months, 5 – 15 ng/mL thereafter
- Heart transplant: 10 – 20 ng/mL for the first 3 months, 5 – 15 ng/mL thereafter
- Lung transplant: 10 – 20 ng/mL for the first month, then 5 – 15 ng/mL thereafter

During the first months post-transplant, monitoring of the following parameters should be undertaken on a routine basis: blood pressure, ECG, visual status, blood glucose levels, electrolytes (particularly potassium), creatinine, BUN, urinary output, haematology parameters, coagulation values, and liver and renal function tests. If clinically relevant changes are seen, adjustment of the immunosuppressive regimen should be considered.

Post-transplant improvement in the condition of the patient may alter the pharmacokinetics of ADVAGRAF XL. This should be considered when deciding upon a maintenance regimen.

### **4.3 CONTRAINDICATIONS**

ADVAGRAF XL is contraindicated in patients hypersensitive to tacrolimus or other macrolides, or to other ingredients of the capsules.

### **4.4 SPECIAL WARNINGS AND PRECAUTIONS FOR USE**

Tacrolimus therapy requires careful monitoring in hospital units equipped and staffed with adequate laboratory and supportive medical resources. The drug should only be prescribed, and changes in immunosuppressive therapy should be initiated, by physicians experienced in immunosuppressive therapy and the management of transplant patients. The physician responsible for maintenance therapy should have complete information requisite for the follow-up of the patient.

#### **Post-transplant diabetes mellitus (PTDM)**

Post-transplant insulin dependent diabetes mellitus (PTDM - use of insulin for 30 or more consecutive days, with < 5 day gap, by patients without a prior history of insulin or non-insulin-dependent diabetes mellitus) was reported in 20% (30/151) and 6% (17/281) of tacrolimus treated kidney transplant patients in the US and European randomised trials respectively. The median time to onset of PTDM was 68 days. Insulin dependence was reversible in 15% of these patients at one year and in 50% at two years post-transplant. Black and Hispanic patients were found to be at increased risk of development of PTDM in the US trial. The risk benefit ratio should be carefully considered before using tacrolimus in kidney transplant patients with a pre-transplant diabetic condition.

In liver transplantation PTDM was reported in 18% (42/239) and 11% (26/239) of tacrolimus treated patients and was reversible in 45% and 31% of these patients at one year post transplant in the US and European randomised trials respectively.

Insulin-dependent post-transplant diabetes mellitus was reported in 13% (10/75) and 22% (29/132) of tacrolimus-treated heart transplant patients receiving mycophenolate mofetil or azathioprine and was reversible in 30% and 17% of these patients at one year post transplant, in the US and European randomised studies, respectively.

#### **Neurotoxicity**

Neurological and CNS disorders have been reported with tacrolimus therapy. Symptoms include tremor, headache, changes in motor function, sensory function or mental status, insomnia, seizures, coma and delirium. Patients experiencing such events should be carefully monitored. In cases of severe or worsening neurological disorder, adjustment of the immunosuppressive regimen should be considered.

#### **Posterior reversible encephalopathy syndrome (PRES)**

Patients treated with tacrolimus have been reported to develop posterior reversible encephalopathy syndrome (PRES). If patients taking tacrolimus present with symptoms indicating PRES such as headache, altered mental status, seizures, and visual disturbances, a radiological procedure (e.g. MRI) should be performed. If PRES is diagnosed, adequate blood pressure and seizure control and immediate discontinuation of systemic tacrolimus is advised. Most patients completely recover after appropriate measures are taken.

### **Pure red cell aplasia (PRCA)**

Cases of pure red cell aplasia (PRCA) have been reported in patients treated with tacrolimus. All patients reported risk factors for PRCA such as parvovirus B19 infection, underlying disease or concomitant medications associated with PRCA.

### **Nephrotoxicity**

Tacrolimus can cause renal impairment characterized by increases in serum creatinine as a result of a reduced glomerular filtration rate, particularly when used in high doses. These changes have been observed to be dose dependent and improvements have been associated with reduced dosing. The mechanism leading to these changes is not fully understood. Use of tacrolimus with sirolimus in heart transplantation patients in a US study was associated with increased risk of renal function impairment, and is not recommended. Patients with impaired renal function should be monitored closely as the dosage of tacrolimus may need to be reduced.

Care should be taken in using tacrolimus with other nephrotoxic drugs. In particular, tacrolimus should not be used simultaneously with cyclosporin. Tacrolimus or cyclosporin should be discontinued at least 24 hours prior to initiating the other. In the presence of elevated tacrolimus or cyclosporin concentrations, dosing with the other drug usually should be further delayed.

### **Hyperkalaemia**

Mild to severe hyperkalaemia was reported in patients treated with tacrolimus, especially in patients with renal impairment. Patients may require treatment, and should avoid high dietary potassium intake. Serum potassium levels should be monitored and potassium-sparing diuretics should not be used during tacrolimus therapy.

### **Vaccinations**

As with other immunosuppressants, response to vaccination during treatment with tacrolimus may be less effective. The use of live attenuated vaccines should be avoided.

### **Gastrointestinal disorders**

Gastrointestinal perforation has been reported in patients treated with tacrolimus, although all cases were considered a complication of transplant surgery or accompanied by infection, diverticulum, or malignant neoplasm. As gastrointestinal perforation is a medically important event that may lead to a life-threatening or serious condition, adequate treatments including surgery should be considered immediately after a suspect symptom occurs.

### **Potential interactions**

When substances with a potential for interaction (Refer to Section 4.5 - INTERACTIONS WITH OTHER MEDICINES AND OTHER FORMS OF INTERACTIONS) – particularly strong inhibitors of CYP3A4 (such as telaprevir, boceprevir, ritonavir, ketoconazole, voriconazole, itraconazole or clarithromycin) or inducers of CYP3A4 (such as rifampin, rifabutin) – are being combined with tacrolimus, tacrolimus blood levels should be monitored to adjust the tacrolimus dose as appropriate in order to maintain similar tacrolimus exposure.

## **Malignancies**

As with other potent immunosuppressive compounds, patients treated with tacrolimus are at increased risk of developing lymphomas and other malignancies, particularly of the skin. The risk appears to be related to the intensity and duration of immunosuppression rather than to the use of any specific agent. Exposure to sunlight and ultraviolet (UV) light should be limited by wearing protective clothing and using a sunscreen with a high protection factor.

Lymphoproliferative disorder (LPD) related to Epstein-Barr Virus (EBV) infection has been reported in immunosuppressed organ transplant recipients. In patients switched to tacrolimus, this may be attributable to over-immunosuppression before commencing therapy with this agent. Very young (< 2 years), EBV-sero-negative children have been reported to have an increased risk of developing lymphoproliferative disorders. Therefore, in this patient group, EBV serology should be ascertained before starting treatment with tacrolimus. During treatment, careful monitoring is recommended.

## **Infections**

Like other immunosuppressants, tacrolimus predisposes patients to the development of a variety of bacterial, fungal, parasitic and viral infections. Oversuppression of the immune system can also increase susceptibility to opportunistic infections, sepsis and fatal infections. Among these conditions are BK virus associated nephropathy and JC virus associated progressive multifocal leukoencephalopathy (PML). These infections are often related to a high total immunosuppressive burden and may lead to serious or fatal conditions that physicians should consider in the differential diagnosis in immunosuppressed patients with deteriorating renal function or neurological symptoms.

## **Hypertension**

Hypertension is a common adverse effect of tacrolimus therapy. Antihypertensive therapy may be required; the control of blood pressure can be accomplished with any of the common antihypertensive agents. Since tacrolimus may cause hyperkalemia, potassium-sparing diuretics should be avoided. While calcium-channel blocking agents can be effective in treating tacrolimus-associated hypertension, care should be taken since interference with tacrolimus metabolism may require a dosage reduction.

## **Myocardial Hypertrophy**

Ventricular hypertrophy or hypertrophy of the septum, reported as cardiomyopathies have been observed in a few cases in association with administration of tacrolimus. Most of these have been reversible, occurring primarily in patients having tacrolimus blood trough levels higher than the recommended level. Mean tacrolimus whole blood trough concentrations during the period prior to diagnosis of myocardial hypertrophy in 20 patients with pre and post treatment echo cardiograms ranged from 10.6 to 53.3 ng/mL in infants (N = 10, age 0.4 to 2 years), 4.0 to 45.7 ng/mL in children (N = 7, age 2 to 15 years) and 10.9 to 24.3 ng/mL in adults (N = 3, age 37 to 45 years). Other factors observed to increase the risk of these clinical conditions are, for example, previously existing heart diseases, corticosteroid usage, hypertension, renal or hepatic dysfunction, and fluid overload. Accordingly, high-risk patients should be monitored, e.g., with echocardiography or ECG. If abnormalities develop, dose reduction of tacrolimus therapy, or change of treatment to other immunosuppressive agent should be considered.

## **QT Interval Prolongation**

Tacrolimus may prolong the QT interval and may cause Torsade de Pointes. Caution should be exercised in patients with known risk factors for QT prolongation (including, but not limited to, congenital or acquired QT prolongation, concomitant medications known to prolong the QT interval or known to increase tacrolimus exposure).

## **Conversion between agents**

### *Conversion between tacrolimus formulations*

Various formulations of tacrolimus are available. Medication errors have resulted in incorrect dosing or unsupervised switching between tacrolimus formulations. This has led to serious adverse events, including graft rejection, or other side effects which could be a consequence of either under exposure or over exposure to tacrolimus. Therefore, it is appropriate to prescribe and dispense tacrolimus by tradename, taking care to specify appropriate daily dosing (e.g. PROGRAF tacrolimus immediate-release capsules - twice daily dosing, ADVAGRAF XL prolonged-release capsules – once daily dosing). It should be emphasised that patients, once titrated to an effective dose of a particular formulation of tacrolimus, should not be changed to another formulation of tacrolimus without blood trough level monitoring, clinical assessment and re-titration (Refer to Section 4.2 - DOSE AND METHOD OF ADMINISTRATION - Conversion).

### *Conversion with cyclosporin*

Tacrolimus should not be administered concurrently with cyclosporin as the half-life of the latter may be increased. Synergistic/additive nephrotoxic effects can also occur. Care should be taken when administering tacrolimus to patients who have previously received cyclosporin and when converting patients from cyclosporin- to tacrolimus -based therapy. It is recommended that cyclosporin blood levels are monitored prior to the administration of tacrolimus. The most appropriate time to initiate tacrolimus therapy should be based upon information on cyclosporin blood levels and the clinical condition of the patient. Dosing may be delayed in the presence of elevated cyclosporin levels. Monitoring of cyclosporin blood levels should be continued following conversion as the clearance of cyclosporin may be affected. A 24 hour interval between stopping cyclosporin and starting tacrolimus has been commonly used.

Patients switched to tacrolimus rescue therapy should not be given anti-lymphocyte treatment concomitantly.

## **Use in hepatic impairment**

Tacrolimus is extensively metabolised by the liver. In patients with liver impairment dose reduction is recommended. (Refer to Section 4.2 - DOSE AND METHOD OF ADMINISTRATION – Dose adjustments in special populations.)

## **Use in renal impairment**

No dose adjustment is required. However, careful monitoring of renal function is recommended. (Refer to Section 4.2 - DOSE AND METHOD OF ADMINISTRATION – Dose adjustments in special populations.)



### **Use in the elderly**

Experience in the elderly is limited. There is no evidence presently available to suggest that doses should be altered in elderly patients. (Refer to Section 4.2 - DOSE AND METHOD OF ADMINISTRATION – Dose adjustments in special populations.)

### **Paediatric use**

Higher mg/kg doses may be required in children compared with adults to achieve the same tacrolimus blood concentration. It is recommended that the initial intravenous dose if needed should be 0.05 – 0.06mg/kg/day: initial oral doses should be 0.15 – 0.30 mg/kg/day as two divided doses. (Refer to Section 4.2 - DOSE AND METHOD OF ADMINISTRATION.)

### **Effects on laboratory tests**

No data available

## **4.5 INTERACTIONS WITH OTHER MEDICINES AND OTHER FORMS OF INTERACTIONS**

### **Metabolic Interactions**

Systemically available tacrolimus is metabolised by hepatic CYP3A4. There is also evidence of gastrointestinal metabolism by CYP3A4 in the intestinal wall. Concomitant use of drugs or herbal remedies known to inhibit or induce CYP3A4 may affect the metabolism of tacrolimus and thereby increase or decrease tacrolimus blood levels. It is strongly recommended to closely monitor tacrolimus blood levels, as well as QT prolongation (with ECG), renal function and other side effects, whenever drugs which have the potential to alter CYP3A metabolism are used concomitantly and to adjust the tacrolimus dose as appropriate in order to maintain similar tacrolimus exposure.

### **Inhibitors of Metabolism**

Clinically the following substances have been shown to increase tacrolimus blood levels:

Strong interactions have been observed with antifungal agents such as ketoconazole, fluconazole, itraconazole and voriconazole, the macrolide antibiotic erythromycin, HIV protease inhibitors (e.g. ritonavir, nelfinavir, saquinavir), HCV protease inhibitors (e.g. telaprevir, boceprevir) and amiodarone. Concomitant use of these drugs may require decreased tacrolimus doses in nearly all patients.

Weaker interactions have been observed with clotrimazole, clarithromycin, josamycin, nifedipine, nicardipine, diltiazem, verapamil, danazol, ethinylestradiol, omeprazole and nefazodone.

The herbal remedy schisandra sphenanthera extract inhibits CYP3A4 and may increase the blood levels of tacrolimus.

In vitro the following substances have been shown to be potential inhibitors of tacrolimus metabolism: bromocriptine, cortisone, dapsone, ergotamine, gestodene, lidocaine, mephenytoin, miconazole, midazolam, nilvadipine, norethindrone, quinidine, tamoxifen, (triacetyl)oleandomycin.

Grapefruit juice has been reported to increase the blood level of tacrolimus and should therefore be avoided.

Lansoprazol and cyclosporin may potentially inhibit CYP3A4-mediated metabolism of tacrolimus and thereby increase tacrolimus whole blood concentrations.

### **Inducers of Metabolism**

Clinically the following substances have been shown to decrease tacrolimus blood levels:

Strong interactions have been observed with rifampicin, phenytoin or St John's Wort (*Hypericum perforatum*) which may require increased tacrolimus doses in almost all patients. Clinically significant interactions have also been observed with phenobarbital. Maintenance doses of corticosteroids have been shown to reduce tacrolimus blood levels.

High dose prednisolone or methylprednisolone administered for the treatment of acute rejection have the potential to increase or decrease tacrolimus blood levels.

Carbamazepine, metamizole and isoniazid have the potential to decrease tacrolimus concentrations.

### **Effect of Tacrolimus on the Metabolism of Other Drugs**

Tacrolimus is a known CYP3A4 inhibitor; thus concomitant use of tacrolimus with drugs known to be metabolised by CYP3A4 may affect the metabolism of such drugs.

The half-life of cyclosporin is prolonged when tacrolimus is given concomitantly. In addition, synergistic/additive nephrotoxic effects can occur. For these reasons, the combined administration of cyclosporin and tacrolimus is not recommended and care should be taken when administering tacrolimus to patients who have previously received cyclosporin.

Tacrolimus have been shown to increase the blood level of phenytoin.

As tacrolimus may reduce the clearance of steroid-based contraceptives leading to increased hormone exposure, particular care should be exercised when deciding upon contraceptive measures.

Limited knowledge of interactions between tacrolimus and statins is available. Available data suggests that the pharmacokinetics of statins are largely unaltered by the co-administration of tacrolimus.

Animal data have shown that tacrolimus could potentially decrease the clearance and increase the half-life of pentobarbital and antipyrine.

Other potential interactions that may increase systemic exposure of tacrolimus:

Prokinetic agents such as metoclopramide and cisapride.

Cimetidine.

Magnesium-aluminum-hydroxide.

### **Other Interactions which have led to Clinically Detrimental Effects**

Concurrent use of tacrolimus with drugs known to have nephrotoxic or neurotoxic effects may increase these effects (e.g. aminoglycosides, gyrase inhibitors, vancomycin, cotrimoxazole, NSAIDs, ganciclovir or aciclovir).

Enhanced nephrotoxicity has been observed following the administration of amphotericin B and ibuprofen in conjunction with tacrolimus.

As tacrolimus treatment may be associated with hyperkalaemia, or may increase pre-existing hyperkalaemia, high potassium intake, or potassium-sparing diuretics (e.g. amiloride, triamterene or spironolactone) should be avoided.

Immunosuppressants may affect the response to vaccination and vaccination during treatment with tacrolimus may be less effective. The use of live attenuated vaccines should be avoided.

### **Protein Binding Considerations**

Tacrolimus is extensively bound to plasma proteins. Possible interactions with other drugs known to have high affinity for plasma proteins should be considered (e.g. NSAIDs, oral anticoagulants or oral antidiabetics).

## **4.6 FERTILITY, PREGNANCY AND LACTATION**

### **Effects on fertility**

Tacrolimus subcutaneously administered to male rats at doses of 2 or 3 mg/kg/day resulted in a dose-related decrease in sperm count.

### **Use in pregnancy – Pregnancy Category C**

In reproduction studies in rats and rabbits, adverse effects on the fetus were observed mainly at dose levels that were toxic to the dams.

Tacrolimus given orally at 1.0 mg/kg (0.8 to 2.2 times the clinical dose range based on body surface area) to male and female rats, prior to and during mating, as well as to dams during gestation and lactation, was associated with embryoletality and adverse effects on female reproduction which were indicated by a higher rate of post-implantation loss and increased numbers of undelivered and nonviable pups. When given at 3.2 mg/kg (2.6 to 6.9 times the clinical dose range based on body surface area), tacrolimus was associated with maternal and paternal toxicity as well as reproductive toxicity including marked adverse effects on estrus cycles, parturition, pup viability, and pup malformations.

Human data show that tacrolimus is able to cross the placenta.

There are no adequate and well-controlled studies in pregnant women. There is data from a voluntary pregnancy exposure registry (Transplantation Pregnancy Registry International (TPRI)) that monitors outcomes of pregnancy in female transplant recipients and those fathered by male transplant recipients exposed to immunosuppressants including tacrolimus.

Safety data from postmarketing surveillance and the TPRI suggest infants of organ transplant recipients using immunosuppressive medications including tacrolimus have an increased risk for miscarriage, pre-term delivery (< 37 weeks), low birth weight (< 2500 g), birth defects/congenital anomalies and fetal distress.

The use of tacrolimus during pregnancy has been associated with neonatal hyperkalaemia and renal dysfunction.

Tacrolimus use may also be associated with hyperglycemia or diabetes in pregnancy in the absence of pre-existing diabetes or gestational. Monitor maternal blood glucose levels regularly.

Tacrolimus may exacerbate hypertension in pregnant women and increase pre-eclampsia. Monitor and control blood pressure.

Females and males of reproductive potential should consider the use of appropriate contraception prior to starting treatment with tacrolimus.

Tacrolimus should be used during pregnancy only if the potential benefit to the mother justifies potential risk to the fetus.

### **Use in lactation**

Tacrolimus is excreted into breast milk. It is therefore recommended that mothers should not breast-feed while receiving tacrolimus.

### **4.7 EFFECTS ON ABILITY TO DRIVE AND USE MACHINES**

Tacrolimus may cause visual and neurological disturbances. Patients treated with tacrolimus who are affected by such disorders should not drive a car or operate dangerous machinery.

### **4.8 ADVERSE EFFECTS (UNDESIRABLE EFFECTS)**

The adverse drug reaction profile associated with immunosuppressive agents is often difficult to establish owing to the underlying disease and the concurrent use of multiple medications.

The most commonly reported adverse drug reactions (occurring in > 10% of patients) are tremor, renal impairment, hyperglycaemic conditions, diabetes mellitus, hyperkalaemia, infections, hypertension and insomnia.

Many of the adverse drug reactions stated below are reversible and/or respond to dose reduction. Oral administration appears to be associated with a lower incidence of adverse drug reactions compared with intravenous use. Adverse drug reactions are listed below in descending order by frequency of occurrence: very common (>1/10); common (>1/100, <1/10); uncommon (>1/1,000, <1/100); rare (>1/10,000, <1/1,000); very rare (<1/10,000, including isolated reports).

#### **Infections and infestations**

As is well known for other potent immunosuppressive agents, patients receiving tacrolimus are frequently at increased risk for infections (viral, bacterial, fungal, protozoal). The course of pre-existing infections may be aggravated. Both generalised and localised infections can occur.

Cases of BK virus associated nephropathy, as well as cases of JC virus associated progressive multifocal leukoencephalopathy (PML), have been reported in patients treated with immunosuppressants, including tacrolimus.

#### **Neoplasms benign, malignant and unspecified**

Patients receiving immunosuppressive therapy are at increased risk of developing malignancies. Benign as well as malignant neoplasms including EBV-associated lymphoproliferative disorders and skin malignancies have been reported in association with tacrolimus treatment.

### **Blood and lymphatic system disorders**

- common: anaemia, leukopenia, thrombocytopenia, leukocytosis, red blood cell analyses abnormal
- uncommon: coagulopathies, coagulation and bleeding analyses abnormal, pancytopenia, neutropenia
- rare: thrombotic thrombocytopenic purpura, hypoprothrombinaemia
- unknown frequency: agranulocytosis, haemolytic anaemia, pure red cell aplasia (observed during post-marketing)

### **Immune system disorders**

Allergic and anaphylactoid reactions have been observed in patients receiving tacrolimus

### **Endocrine disorders**

- rare: hirsutism

### **Metabolism and nutrition disorders**

- very common: hyperglycaemic conditions, diabetes mellitus, hyperkalaemia
- common: hypomagnesaemia, hypophosphataemia, hypokalaemia, hypocalcaemia, hyponatraemia, fluid overload, hyperuricaemia, appetite decreased, anorexia, metabolic acidoses, hyperlipidaemia, hypercholesterolaemia, hypertriglyceridaemia, other electrolyte abnormalities
- uncommon: dehydration, hypoproteinaemia, hyperphosphataemia, hypoglycaemia

### **Psychiatric disorders**

- very common: insomnia
- common: anxiety symptoms, confusion and disorientation, depression, depressed mood, mood disorders and disturbances, nightmare, hallucination, mental disorders
- uncommon: psychotic disorder

### **Nervous system disorders**

- very common: tremor, headache
- common: seizures, disturbances in consciousness, paraesthesias and dysaesthesias, peripheral neuropathies, dizziness, writing impaired, nervous system disorders
- uncommon: coma, central nervous system haemorrhages and cerebrovascular accidents, paralysis and paresis, encephalopathy, speech and language abnormalities, amnesia
- rare: hypertonia
- very rare: myasthenia

### **Eye disorders**

common: vision blurred, photophobia, eye disorders

uncommon: cataract

rare: blindness

### **Ear and labyrinth disorders**

common: tinnitus

uncommon: hypoacusis

rare: deafness neurosensory

very rare: hearing impaired

### **Cardiac disorders**

common: ischaemic coronary artery disorders, tachycardia

uncommon: ventricular arrhythmias and cardiac arrest, heart failures, cardiomyopathies, ventricular hypertrophy, supraventricular arrhythmias, palpitations, ECG investigations abnormal, heart rate and pulse investigations abnormal, QT prolongation, Torsades de pointes.

rare: pericardial effusion

very rare: echocardiogram abnormal

### **Vascular disorders**

very common: hypertension

common: haemorrhage, thrombembolic and ischaemic events, peripheral vascular disorders, vascular hypotensive disorders

uncommon: infarction, venous thrombosis deep limb, shock

### **Respiratory, thoracic and mediastinal disorders**

common: dyspnoea, parenchymal lung disorders, pleural effusion, pharyngitis, cough, nasal congestion and inflammations

uncommon: respiratory failures, respiratory tract disorders, asthma

rare: acute respiratory distress syndrome

### **Gastrointestinal disorders**

very common: diarrhoea, nausea

common: gastrointestinal inflammatory conditions, gastrointestinal ulceration and perforation, gastrointestinal haemorrhages, stomatitis and ulceration, ascites, vomiting, gastrointestinal and abdominal pains, dyspeptic signs and symptoms, constipation, flatulence, bloating and distension, loose stools, gastrointestinal signs and symptoms

uncommon: ileus paralytic, peritonitis, acute and chronic pancreatitis, blood amylase increased, gastrooesophageal reflux disease, impaired gastric emptying

rare: subileus, pancreatic pseudocyst

### **Hepatobiliary disorders**

very common: liver function test abnormal

common: bile duct disorders, cholestasis and jaundice, hepatocellular damage and hepatitis

rare: hepatic artery thrombosis, venoocclusive liver disease

very rare: hepatic failure

### **Skin and subcutaneous disorders**

common: pruritus, rash, alopecias, acne, sweating increased

uncommon: dermatitis, photosensitivity

rare: toxic epidermal necrolysis (Lyell's syndrome)

very rare: Stevens Johnson syndrome

### **Musculoskeletal and connective tissue disorders**

common: arthralgia, muscle cramps, pain in limb\*, back pain

uncommon: joint disorders

### **Renal and urinary disorders**

very common: renal impairment

common: renal failure, renal failure acute, oliguria, renal tubular necrosis, nephropathy toxic, urinary abnormalities, bladder and urethral symptoms

uncommon: anuria, haemolytic uraemic syndrome

very rare: nephropathy, cystitis haemorrhagic

### **Reproductive system and breast disorders**

uncommon: dysmenorrhoea and uterine bleeding

### **General disorders and administration site conditions**

common: asthenic conditions, febrile disorders, oedema, pain and discomfort, blood alkaline phosphatase increased, weight increased, body temperature perception disturbed

uncommon: multi-organ failure, influenza like illness, temperature intolerance, chest pressure sensation, feeling jittery, feeling abnormal, blood lactate dehydrogenase increased, weight decreased

rare: thirst, fall, chest tightness, mobility decreased, ulcer

very rare: fat tissue increased

## **Injury, poisoning and procedural complications**

common: primary graft dysfunction

\*: In isolated cases, pain in limb has been reported as part of Calcineurin-Inhibitor Induced Pain Syndrome (CIPS), which typically presents bilaterally and symmetrical, severe, ascending pain in the lower extremities

### Post Marketing Experience

The following adverse events have been reported in association with tacrolimus use during worldwide post-marketing experience:

*Blood and lymphatic system disorders*

*Musculoskeletal and connective tissue disorders*

unknown frequency: Calcineurin-inhibitor induced pain syndrome (CIPS)\*

Medication errors, including inadvertent, unintentional or unsupervised substitution of immediate- or prolonged-release tacrolimus formulations, have been observed. A number of associated cases of transplant rejection have been reported (frequency cannot be estimated from available data).

### **Reporting suspected adverse effects**

Reporting suspected adverse reactions after registration of the medicinal product is important. It allows continued monitoring of the benefit-risk balance of the medicinal product. Healthcare professionals are asked to report any suspected adverse reactions at [www.tga.gov.au/reporting-problems](http://www.tga.gov.au/reporting-problems).

## **4.9 OVERDOSE**

Experience of overdosage is limited.

Early clinical experience (when initial induction doses were 2 – 3 times greater than those currently recommended) suggested that symptoms of overdosage may include glucose intolerance, renal, neurological and cardiac disorders, hyperkalaemia and hypertension. Over immunosuppression may increase risk of severe infections.

Liver function clearly influences all pre- and post-operative pharmacokinetic variables. Patients with failing liver grafts or those switched from other immunosuppressive therapy to ADVAGRAF XL should be monitored carefully to avoid overdosage.

No specific antidote to tacrolimus therapy is available. If overdosage occurs, general supportive measures and symptomatic treatment should be conducted.

Based on the poor aqueous solubility and extensive erythrocyte and plasma protein binding, it is anticipated that ADVAGRAF XL will not be dialysable. Data on haemoperfusion are not available. Activated charcoal may reduce absorption of the drug if given within one or two hours after ingestion. In patients who are not fully conscious or have impaired gag reflex, consideration should be given to administering activated charcoal via a nasogastric tube, once the airway is protected.

For information on the management of overdose, contact the Poisons Information Centre on 13 11 26 (Australia).



## 5 PHARMACOLOGICAL PROPERTIES

### 5.1 PHARMACODYNAMIC PROPERTIES

#### Mechanism of action

Tacrolimus is a macrolide lactone with potent in vitro and in vivo immunosuppressive activity. Studies suggest that tacrolimus inhibits the formation of cytotoxic lymphocytes which are regarded as being primarily responsible for graft rejection. Tacrolimus suppresses T-cell activation and T-helper-cell-dependent B-cell proliferation, as well as the formation of lymphokines such as interleukins-2 and -3 and gamma-interferon and the expression of the interleukin-2 receptor. At the molecular level, the effects of tacrolimus appear to be mediated by binding to a cytosolic protein (FKBP), which is responsible for the intracellular accumulation of the compound. A complex of tacrolimus-FKBP-12, calcium, calmodulin and calcineurin is formed and the phosphatase activity of calcineurin inhibited.

Studies in animals and man have shown that tacrolimus is able to prevent and treat graft rejection following transplantation of the liver, kidney, and other solid organs.

#### Clinical trials

##### Tacrolimus immediate-release capsules (PROGRAF®)

###### Liver

The efficacy and safety of a tacrolimus based immunosuppressive regimen following orthotopic liver transplantation was assessed in two prospective, randomised, non-blinded multicentre trials. The active control groups were treated with a cyclosporin based regimen. In a European trial, patients received a tacrolimus-steroid based regimen (n = 264) or a cyclosporin-azathioprine-steroid (with or without anti-lymphocyte globulin) based regimen (n = 265).

Equivalent graft survival (77.5 vs. 72.69%) and patient survival (82.9 vs. 77.5%) was seen. Significant reductions were seen in the tacrolimus treated patients for incidence of acute rejection (40.5 vs. 49.8%), refractory acute rejection (0.8 vs. 5.3%) and chronic rejection (1.5 vs. 5.3%). In American trial patients received a tacrolimus-steroid regimen (n = 263) or a cyclosporin (mainly triple therapy) based regimen (n = 266). Equivalent graft survival (82 vs. 79%) and patient survival (88 vs. 88%) rates were observed. Tacrolimus was associated with significant reductions in the incidence of acute rejection (68 vs. 76%), steroid resistant rejection (19 vs. 36%) and refractory rejection (3 vs. 15%).

###### Kidney

Two randomised, multicentre non-blinded comparative trials were performed in cadaveric kidney transplantation. In an American trial patients received a tacrolimus based (n = 205) or cyclosporin based (n = 207) regimen. All patients also received maintenance azathioprine and corticosteroids and an induction course of an antilymphocyte antibody preparation. Equivalent graft survival (91.2 vs. 87.9%) and patient survival (95.6 vs. 96.6%) was seen for the tacrolimus and cyclosporin treated patients respectively. A significantly reduced one year incidence rate of biopsy confirmed acute rejection (30.7 vs. 46.4%), moderate to severe acute rejection (10.7 vs. 26.6%) and use of antilymphocyte antibody preparation for treatment of rejection (10.7 vs. 25.1%) was seen in the tacrolimus treated patients.

A European trial compared triple drug based immunosuppression with tacrolimus or cyclosporin centred regimens, with 303 and 145 patients randomised to the tacrolimus and cyclosporin arms respectively. Equivalent one year graft survival (82.5 vs. 86.2%) and one year patient survival (93.0 vs. 96.5%) rates were observed, but with significantly reduced one year acute rejection rate (32.3 vs. 54.5%), rate of corticosteroid sensitive rejections (24.4 vs. 42.1%) and rate of corticosteroid resistant rejections (10.2 vs. 20.7%).

### **Heart**

Two open-label, randomised, comparative studies evaluated the safety and efficacy of tacrolimus-based and cyclosporin-based immunosuppression in primary orthotopic heart transplantation. In a Phase 3 study conducted in Europe, 314 patients received a regimen of antibody induction, corticosteroids and azathioprine in combination with tacrolimus or cyclosporin modified for 18 months. In a 3-arm study conducted in the US, 331 patients received corticosteroids and tacrolimus plus sirolimus, tacrolimus plus mycophenolate mofetil (MMF) or cyclosporin modified plus MMF for 1 year.

In the European Phase 3 study, patient / graft survival at 18 months post-transplant was similar between treatment arms, 91.7% in the tacrolimus group and 89.2% in the cyclosporin group. In the US study, patient and graft survival at 12 months was similar with 93.5% survival in the tacrolimus plus MMF group and 86.1% survival in the cyclosporin modified plus MMF group. In the European study, the cyclosporin trough concentrations were above the pre-defined target range (i.e. 100-200 ng/mL) at Day 122 and beyond in 32 – 68% of the patients in the cyclosporin treatment arm, whereas the tacrolimus trough concentrations were within the pre-defined target range (i.e. 5 –15 ng/mL) in 74 – 86% of the patients in the tacrolimus treatment arm.

The US study contained a third arm of a combination regimen of sirolimus, 2mg per day, and full-dose tacrolimus; however, this regimen was associated with increased risk of wound healing complications, renal function impairment, and insulin dependent post-transplant diabetes mellitus, and is not recommended in de novo heart transplant patients (Refer to Section 4.4 - SPECIAL WARNINGS AND PRECAUTIONS FOR USE).

### **Lung**

In a prospective, 2-centre, open-label randomised trial, 74 lung transplant patients (aged 20 –66 years old) were randomised to tacrolimus-based (n = 37) and cyclosporin-based (n = 37) immunosuppression. The drugs were given in combination with mycophenolate mofetil and corticosteroids. Tacrolimus was started immediately after transplantation as continuous intravenous infusion at a dose of 0.015 mg/kg/day and oral tacrolimus was administered at a dose of 0.1 to 0.3 mg/kg/day with subsequent dose adjustments to target trough levels of 12 to 15 ng/mL in the first month and 9 to 12 ng/mL thereafter. The 6-months and 1-year patient survival data was similar in both groups (89% vs. 84% and 82% vs. 71%, cyclosporin vs. tacrolimus respectively). Freedom from acute rejection was comparable at 1 year, 35% in the cyclosporin group and 46% in the tacrolimus group.

Another prospective, randomised, open-label study included 66 patients on tacrolimus versus 67 patients on cyclosporin, aged 20 to 66 years old. The drugs were given in combination with azathioprine and corticosteroids. Tacrolimus was started 6 to 8 hours after transplantation as continuous intravenous infusion at a dose of 0.025 mg/kg/day and oral tacrolimus was administered

at a dose of 0.15 mg/kg/day with subsequent dose adjustments to target trough levels of 10 to 20 ng/mL. The 1-year patient survival was 83% in the tacrolimus group and 71% in the cyclosporin group, the 2-year survival rates were 76% and 66%, respectively. The differences between groups were not statistically significant. Freedom from acute rejection after at least 37 weeks follow-up was also comparable (14% in the tacrolimus group and 11.5% in the cyclosporin group).

A number of published, open, uncontrolled studies have examined the use of tacrolimus in lung transplant patients who have developed refractory acute rejection or bronchiolitis obliterans syndrome while receiving cyclosporin-based immunosuppressive regimens. In these studies, conversion from cyclosporin to tacrolimus has been associated with improved clinical outcomes such as reduced frequency of further acute rejection episodes and stabilisation or improvement in declining FEV<sub>1</sub> values.

### **Tacrolimus prolonged-release capsules (ADVAGRAF® XL)**

Three Phase III non-inferiority studies have been conducted, confirming the safety and efficacy of tacrolimus prolonged-release capsules is comparable to tacrolimus immediate-release capsules in de novo kidney transplant patients aged 12 years and older (n = 638 and 667) and de novo liver transplant patients aged 18 years and older (n = 471). Patient survival and graft survival at 1 year post transplant ranged from 91% to 99%. In these studies tacrolimus was used in combination with corticosteroids (liver transplant), with corticosteroids and mycophenolate mofetil (kidney), or with corticosteroids, mycophenolate mofetil and basiliximab (kidney).

The results of all conversion studies demonstrate that conversion from tacrolimus immediate-release-based immunosuppression regimens on 1:1 (mg:mg) basis has been performed in adult kidney, liver and heart transplant recipients without any increase in incidences of acute rejection, graft loss or effects on patient survival rates. Long-term following up of patients in the conversion studies (up to 2 years) confirm patient survival and graft survival with ADVAGRAF XL were consistent across all conversion studies, ranging from 97% to 100%.

## **5.2 PHARMACOKINETIC PROPERTIES**

### **Absorption**

In man tacrolimus has been shown to be able to be absorbed throughout the gastrointestinal tract. Available tacrolimus is generally rapidly absorbed.

Following oral administration of tacrolimus immediate-release capsules peak concentrations (C<sub>max</sub>) of tacrolimus in blood are achieved in approximately 1 - 3 hours. ADVAGRAF XL is a prolonged-release formulation of tacrolimus resulting in an extended oral absorption profile with an average time to C<sub>max</sub> of approximately 2 hours. In some patients, tacrolimus appears to be continuously absorbed over a prolonged period yielding a relatively flat absorption profile. The mean oral bioavailability of tacrolimus is in the range of 20% - 25%.

After oral administration (0.30 mg/kg/day) to liver transplant patients, steady-state concentrations of tacrolimus immediate-release capsules were achieved within 3 days in the majority of patients.

The rate and extent of absorption of tacrolimus is greatest under fasted conditions. The presence of food decreases both the rate and extent of absorption of tacrolimus, the effect being most pronounced after a high-fat meal. The effect of a high-carbohydrate meal is less pronounced.

In stable liver transplant patients, the oral bioavailability of tacrolimus immediate-release capsules was reduced when it was administered after a meal of moderate fat (34% of calories) content. Decreases in AUC (27%) and C<sub>max</sub> (50%), and an increase in t<sub>max</sub> (173%) in whole blood were evident.

In a study of stable renal transplant patients who were administered tacrolimus immediate-release capsules immediately after a standard continental breakfast the effect on oral bioavailability was less pronounced. Decreases in AUC (2 to 12%) and C<sub>max</sub> (15 to 38%), and an increase in t<sub>max</sub> (38 to 80%) in whole blood were evident.

Bile flow does not influence the absorption of tacrolimus.

A strong correlation exists between AUC and whole blood trough levels at steady-state for tacrolimus immediate-release capsules and ADVAGRAF XL. Monitoring of whole blood trough levels therefore provides a good estimate of systemic exposure.

### **Distribution**

In man, the disposition of tacrolimus after intravenous infusion may be described as biphasic.

In the systemic circulation, tacrolimus binds strongly to erythrocytes resulting in an approximate 20:1 distribution ratio of whole blood/plasma concentrations. In plasma, tacrolimus is highly bound (> 98.8%) to plasma proteins, mainly to serum albumin and  $\alpha$ -1-acid glycoprotein.

Tacrolimus is extensively distributed in the body. The steady-state volume of distribution based on plasma concentrations is approximately 1300 l (healthy subjects). Corresponding data based on whole blood averaged 47.6 l.

Tacrolimus is a low-clearance substance. In healthy subjects, the average total body clearance (TBC) estimated from whole blood concentrations was 2.25 l/h. In adult liver, kidney and heart transplant patients, values of 4.1 l/h, 6.7 l/h and 3.9 l/h, respectively, have been observed. Paediatric liver transplant recipients have a TBC approximately twice that of adult liver transplant patients. Factors such as low haematocrit and protein levels, which result in an increase in the unbound fraction of tacrolimus, or corticosteroid-induced increased metabolism are considered to be responsible for the higher clearance rates observed following transplantation.

The half-life of tacrolimus is long and variable. In healthy subjects, the mean half-life in whole blood is approximately 43 hours. In adult and paediatric liver transplant patients, it averaged 11.7 hours and 12.4 hours, respectively, compared with 15.6 hours in adult kidney transplant recipients. Increased clearance rates contribute to the shorter half-life observed in transplant recipients.

### **Metabolism**

Tacrolimus is widely metabolised in the liver, primarily by the cytochrome P450-3A4. Tacrolimus is also considerably metabolised in the intestinal wall. There are several metabolites identified. Only one of these has been shown in vitro to have immunosuppressive activity similar to that of tacrolimus. The other metabolites have only weak or no immunosuppressive activity. In systemic circulation only one of the inactive metabolites is present at low concentrations. Therefore, metabolites do not contribute to pharmacological activity of tacrolimus.

## **Excretion**

Following intravenous and oral administration of <sup>14</sup>C-labelled tacrolimus, most of the radioactivity was eliminated in the faeces. Approximately 2% of the radioactivity was eliminated in the urine. Less than 1% of unchanged tacrolimus was detected in the urine and faeces, indicating that tacrolimus is almost completely metabolised prior to elimination: bile being the principal route of elimination.

### *Pharmacokinetics in special populations*

The pharmacokinetics of tacrolimus in special populations have not been studied in detail. For dose adjustments in special populations, Refer to Section 4.2 – Dose and method of administration.

## **5.3 PRECLINICAL SAFETY DATA**

### **Genotoxicity**

No evidence of genotoxicity was seen in a series of assays for gene mutations and clastogenicity. Tacrolimus did not cause unscheduled DNA synthesis in rodent hepatocytes but high concentrations of tacrolimus have been reported to increase the frequency of sister chromatid exchanges in human lymphocytes *in vitro*.

### **Carcinogenicity**

Tacrolimus did not show any tumourigenic effects in long term carcinogenicity studies using the mouse and rat. The maximum dose tested in the rat resulted in a blood exposure less than, and a plasma exposure 1.4 times the exposure achieved after the maximum recommended clinical dose, 0.3 mg/kg, based on AUC. In mice the maximum dose was 0.8 times the recommended clinical dose based on body surface area.

Patients receiving long-term immunosuppressive therapy are at an increased risk of developing lymphomas and other malignancies (Refer to Section 4.4 – SPECIAL WARNINGS AND PRECAUTIONS FOR USE - Malignancies.)

## **6 PHARMACEUTICAL PARTICULARS**

### **6.1 LIST OF EXCIPIENTS**

ADVAGRAF XL prolonged-release capsules contain hypromellose, ethylcellulose, lactose and magnesium stearate. The capsule shells contain gelatin, titanium dioxide, iron oxide yellow CI77492, iron oxide red CI77491 and sodium lauryl sulfate. The capsules also have a trace of printing ink, Opacode S-1-15083 red, which contains shellac, soya lecithin, simethicone and iron oxide red CI77491.

### **6.2 INCOMPATIBILITIES**

Refer to Section 4.5 - INTERACTIONS WITH OTHER MEDICINES AND OTHER FORMS OF INTERACTIONS.

### **6.3 SHELF LIFE**

In Australia, information on the shelf life can be found on the public summary of the Australian Register of Therapeutic Goods (ARTG). The expiry date can be found on the packaging.

## 6.4 SPECIAL PRECAUTIONS FOR STORAGE

ADVAGRAF XL prolonged-release capsules should be stored below 25°C. After opening the aluminium wrapper, ADVAGRAF XL prolonged-release capsules are stable for 12 months when stored at room temperature. The blister strips should be kept in a dry place and the capsules should be left in the blister until required for use.

## 6.5 NATURE AND CONTENTS OF CONTAINER

ADVAGRAF XL prolonged-release capsules are supplied as blister strips each containing 10 capsules packed within a protective aluminium wrapper.

### Package Quantities

ADVAGRAF XL Prolonged-Release Capsules 0.5 mg	Cartons of 30 and 50* capsules
ADVAGRAF XL Prolonged-Release Capsules 1 mg	Cartons of 30*, 50* and 60 capsules
ADVAGRAF XL Prolonged-Release Capsules 5 mg	Cartons of 30 and 50* capsules

(\* not marketed in Australia)

## 6.6 SPECIAL PRECAUTIONS FOR DISPOSAL

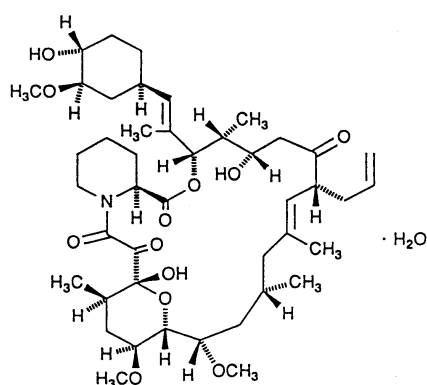
In Australia, any unused medicine or waste material should be disposed of by taking to your local pharmacy.

## 6.7 PHYSICOCHEMICAL PROPERTIES

Tacrolimus appears as white crystals or a crystalline powder, very soluble in methanol, and chloroform, freely soluble in acetone and ethanol and practically insoluble in hexane and water. Tacrolimus is obtained by fermentation as a single enantiomer but exists in tautomeric equilibration in aqueous solution.

### Chemical structure

*[3S-[3R\*[E(1S\*,3S\*,4S\*)],4S\*,5R\*,8S\*,9E,12R\*,14R\*,15S\*,16R\*,18S\*,19S\*,26aR\*]]-5,6,8,11,12,13,14,15,16,17,18,19,24,25,26,26a-hexadecahydro-5,19-dihydroxy-3-[2-(4-hydroxy-3-methoxycyclohexyl)-1-methylethenyl]-14,16-dimethoxy-4,10,12,18-tetramethyl-8-(2-propenyl)-15,19-epoxy-3H-pyrido [2,1-c] [1,4]oxaazacyclotricosine-1,7,20,21(4H,23H)-tetrone, monohydrate.*



Molecular Formula:  $C_{44}H_{69}NO_{12} \cdot H_2O$

Molecular Weight: 822.03

**CAS number**

CAS 104987-11-3

**7 MEDICINE SCHEDULE (POISONS STANDARD)**

Schedule 4 - Prescription Only Medicine

**8 SPONSOR**

Astellas Pharma Australia Pty Ltd  
6 Eden Park Drive  
Macquarie Park NSW 2113

Tel: 1800 751 755 (Medical Information)

Email: [aaumedinfo@astellas.com](mailto:aaumedinfo@astellas.com) (Medical Information)Website: [www.astellas.com/au](http://www.astellas.com/au)**9 DATE OF FIRST APPROVAL**

23 May 2016

**10 DATE OF REVISION**

14 December 2018

**SUMMARY TABLE OF CHANGES**

<b>Section Changed</b>	<b>Summary of new information</b>
<b>4.6</b>	Effects on 'fertility' and 'use in pregnancy' sections revised
<b>4.8</b>	Post Marketing section added